

Using ChatterBox



For the most part, use ChatterBox like you would use any other messaging app.

Touch or Swipe

- Swipe the screen to scroll up and down
- Tap/touch icons



Roll the Trackball

- Wakes up the display
- Scrolls the display up and down

Click the Trackball

- Wakes up the display
- Toggles between Home & Neighbors
- Other screen-specific functions

Type on the Keypad

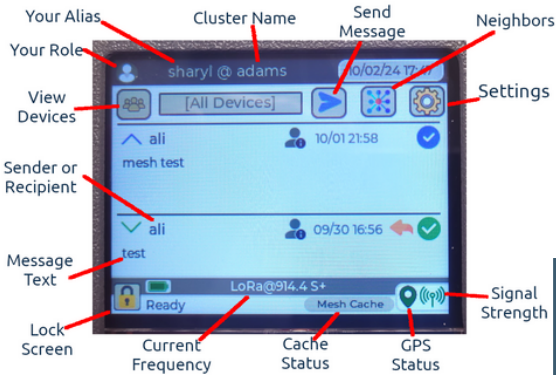
- For all text entry
- Hold *sym* key for numbers & symbols



To maintain optimal mesh performance for your cluster, leave devices powered on all the time. When not carrying, try to leave them in locations with the maximum line of sight (ie: a window).

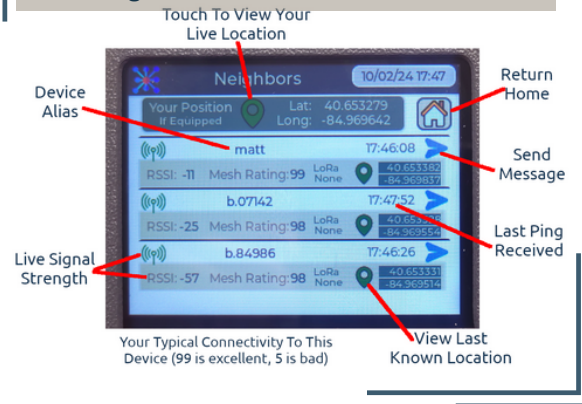
Home

View/reply to messages, device status. This is the main screen of ChatterBox.



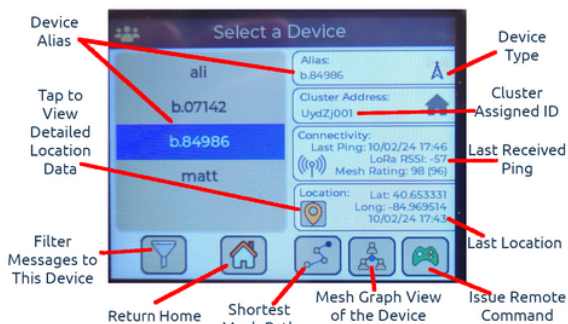
Neighbors

View live signal strength & GPS coordinates of in-range devices



Cluster Devices

See all devices in the cluster (even out-of-range), filter your message view, more.



Location

Last known location for any device in your cluster (even out-of-range), where they are in relation to you.

